

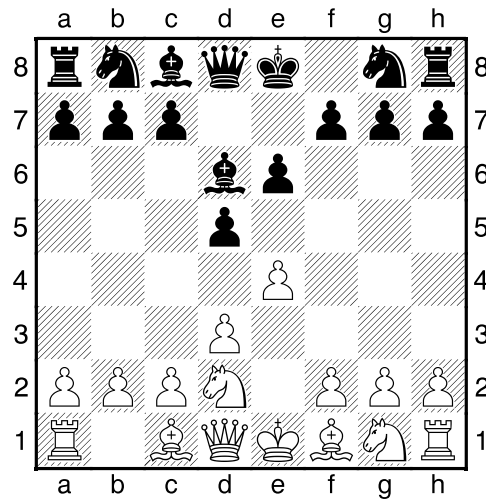
**(36) Bert, Gerards - Theo, Verstappen [C00]**

Intern GESS, 25.06.2018  
[Deep Fritz 14 x64 (15m)]

[C00: Frans: Ongebruikelijke Wit 2e zetten]

1.e4 e6 2.d3 d5 3.Pd2 [laatste zet uit boek]

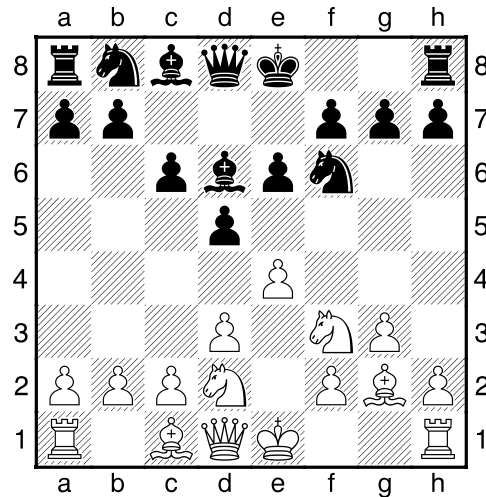
3...Ld6 [Diagram



]

4.g3 [Controleert f4]

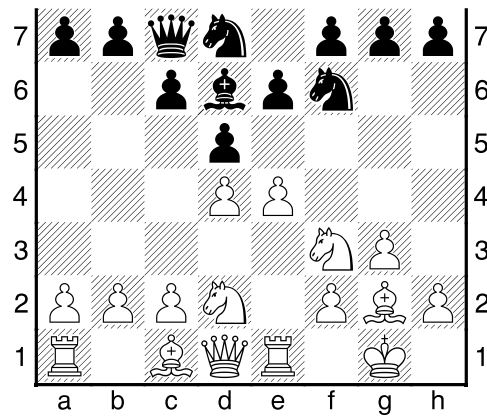
4...Pf6 5.Lg2 c6 6.Pgf3 [Diagram



]

6...Dc7 7.0-0 0-0 8.Te1 Pbd7 9.d4 [Diagram

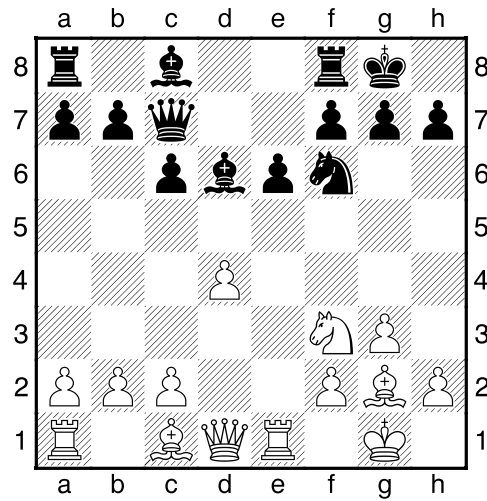




]

9...dxe4 10.Pxe4 Pxe4 11.Txe4 [Wit kan zijn stukken niet verzetten: c8]

11...Pf6 12.Te1 [Diagram

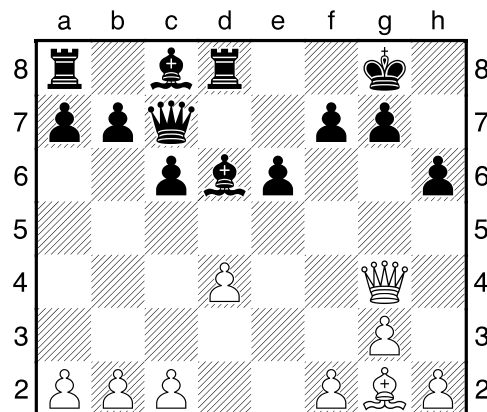


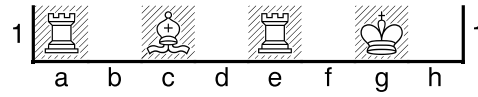
]

12...h6 [Beheerst g5]

13.Pe5 Td8 14.Pg4 [<sup>1</sup>14.Ld2!?= Is misschien sterker.]

14...Pxc4μ 15.Dxc4 [Diagram

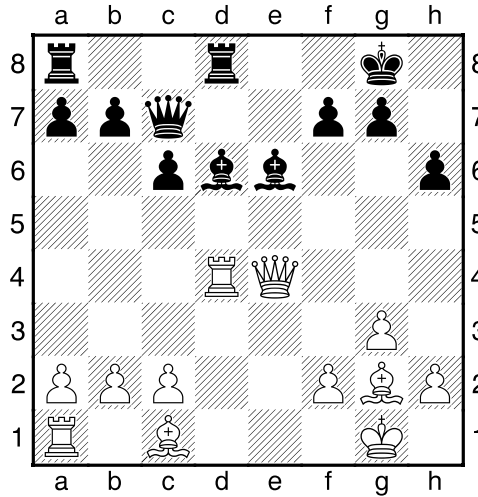




]

15...e5 16.De4 exd4 17.Td1 [17.Ld2 Le6μ]

17...Le6μ 18.Txd4 [Diagram

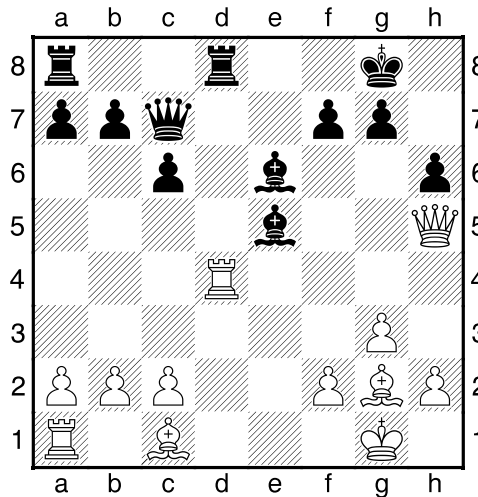


]

18...Ld5 [18...Db6 19.Td1μ]

19.Dg4 Le6 20.Dh5 [20.De4 Db6 21.Td3 Lc5μ]

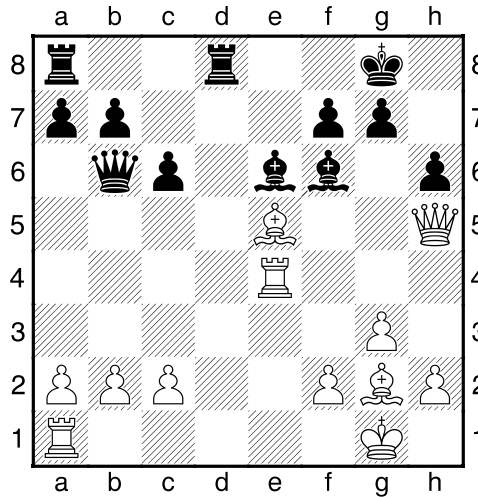
20...Le5 [Diagram



Zwart dreigt met materiaalwinst: Le5xd4]

21.Te4 Lf6 22.Lf4 [Wit dreigt met materiaalwinst: Lf4xc7]

22...Db6 23.Le5? [Diagram



]

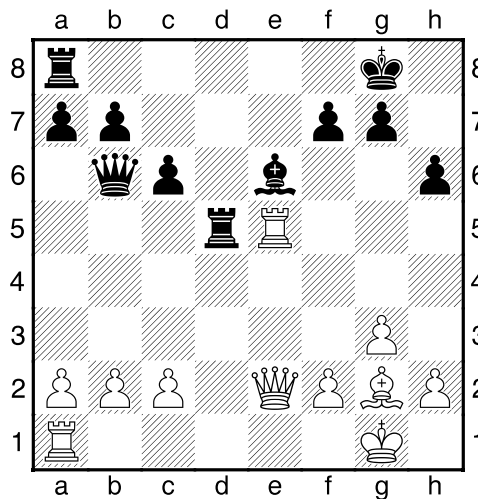
[!23.Txe6!? Is de kritieke voortzetting. 23...fxe6 24.Lh3<sup>3</sup>]

**23...Td5** [23...Lxe5 24.Dxe5 Td2-+]

**24.De2?** [24.c4 Tc5 25.Tae1 Lxe5 26.Txe5 Db4<sub>μ</sub>]

**24...Lxe5** [24...Txe5 25.Txe5 Dxb2 26.Te1 Lxe5 27.Dxe5 Dxe5 28.Txe5 Lxa2 29.Te7-+]

**25.Txe5** [Diagram



]

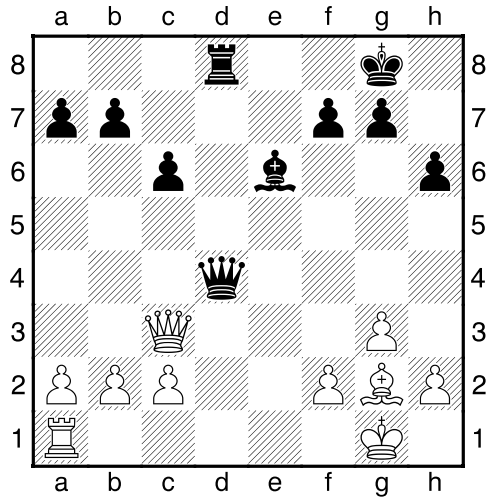
[!25.c4 Td4 26.Txe5 Lxc4 27.Dc2<sub>μ</sub>]

**25...Txe5??** [Geeft de winst uit handen.]

[!25...Dxb2 Nu komt zwart in het voordeel. 26.Txd5 Dxa1+ 27.Td1 Dxa2-+]

**26.Dxe5= Td8 27.Dc3** [27.b3 Td2 28.Df4 Dd4 29.Dxd4 Txd4=]

**27...Dd4<sup>3</sup>** [Diagram

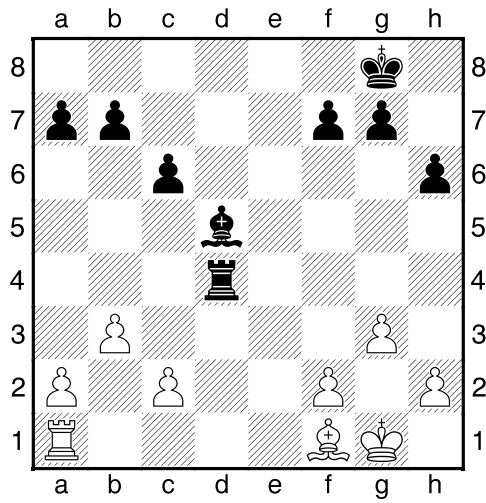


]

28.Dxd4 Txd4 29.b3 [Zekert c4]

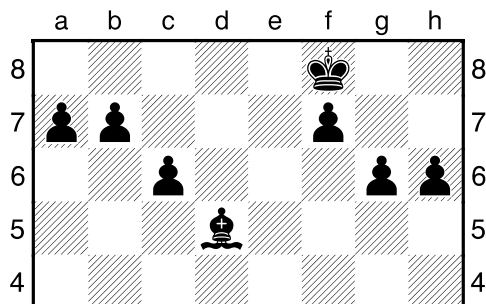
29...Ld5 [29...Lf5 30.c4<sup>3</sup>]

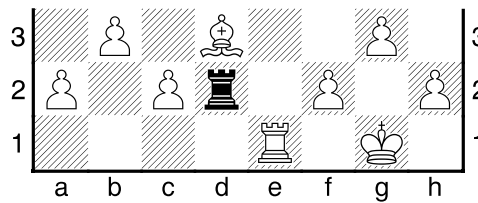
30.Lf1 [Diagram



]

30...Td2 31.Te1 Kf8 32.Ld3 g6 [Diagram





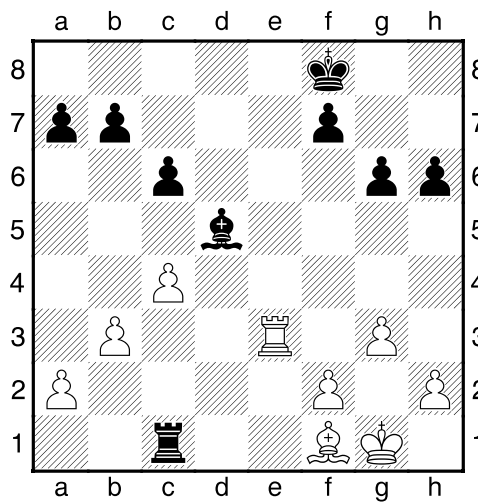
Dekt f5]

33.**Te3** [133.Kf1 En wit haalt alles uit de kast. 33...Lf3 34.Ta1 Td1+ 35.Txd1 Lxd1 36.Ke1=]

33...**Td1+μ** 34.**Lf1 Tc1** [Zwart dreigt met materiaalwinst: Tc1xc2]

[134...b5!?!μ]

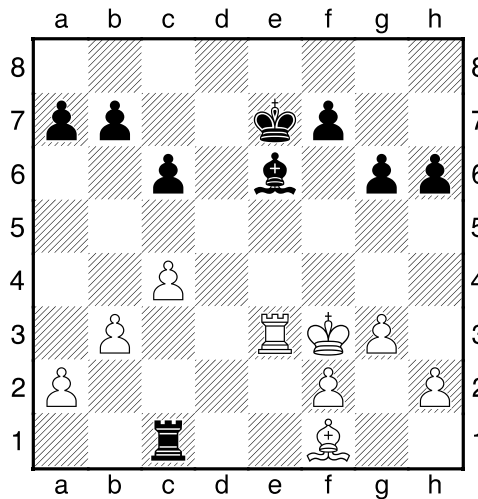
35.c4<sup>3</sup> [Diagram



Wit dreigt met materiaalwinst: c4xd5]

35...**Le6** [Black has a mate threat]

36.**Kg2 Ke7** 37.**Kf3??** [Diagram



]

[137.h3= Was de laatste mogelijkheid.]

**37...Txf1-+**

**0-1**